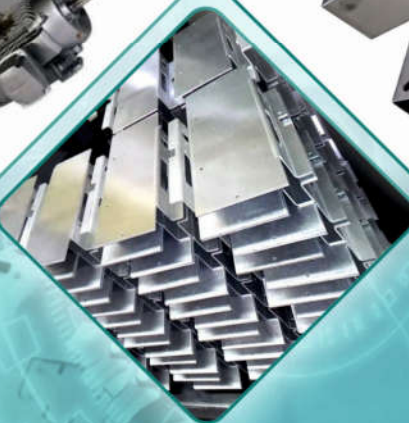
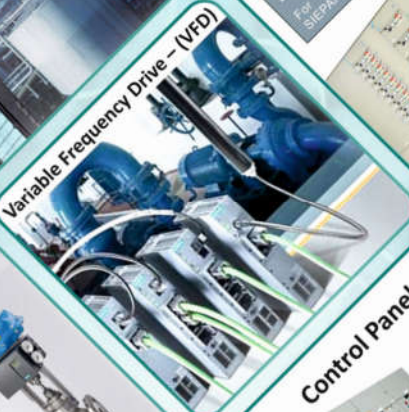


AUTOMATION ENGINEERS A.B. PVT. LTD.

Your trusted partner for Automation needs





About Us

MESSAGE FROM MD



Ashok Somani
MD and Founder

AEAB Pvt. Ltd. is a Technology savvy organization, thrives on providing innovative AUTOMATION SOLUTION to the industry. Our tie-up is with world renowned Technology providers from whom we get continual support in keeping Hardware and Software up to date, besides obtaining the contemporary application solutions being applied in the industry, worldwide. We, at AEAB, provide value added solutions to the customers, which is our experience based and are several notch above what the competition offers.

In addition, our customers have advantage in associating with AEAB Pvt. Ltd. because they obtain SINGLE WINDOW solution for their all Automation needs i.e., under one roof, they are served for PLC, DCS, Instrumentation, AC, DC Drive, MCC and Power Automation solution with INTEGRATED ENGINEERING, Manufacturing, E&C services, AMC & Spare parts support. Hardware and Software is sourced from global OEM whereas Design Engineering is done according to International/Indian standard using automated Engineering tool e.g., E-Plan.

ORGANISATION

Automation Engineers A. B. Pvt. Ltd. is a Company run and managed by professionals, renowned in the Automation industry in their respective area of expertise. Average experience of the key personnel is more than 25 years where as AEAB is serving the industry for almost last Two decade. We provide comprehensive solution, under one roof, meeting all Electrical and Automation needs of the esteemed customers. Namely, the solution offered cover application of PLC, DCS, Electrical Drives, MCC, PCC and Instrumentation. The industry served is primarily Paper Mill, Steel Rolling Mill, Cement Plant, Water Management, Captive Power Plant, Process Plant, Manufacturing Industry to name a few besides a diverse spectrum. Our main strength is proving integrated solution beginning with detailed design to total Commissioning and handing over the plant for operation.

After sale support extended is in terms of providing Trouble shooting, Support during Routine and Captive maintenance, Spare parts is one among our several strengths. Developing Technical skills of the professionals, in affiliation with IASC/NSDC – National organization, is taken care by AEAB Training Centre, through parallel efforts. Short and Long term Internship is provided to the passing out graduates, to make them Industry fit.

Our Vision :

To be Growth Oriented, System Driven, Self Sustaining, Innovative, Ethical and equal opportunity organization having joyful work environment.

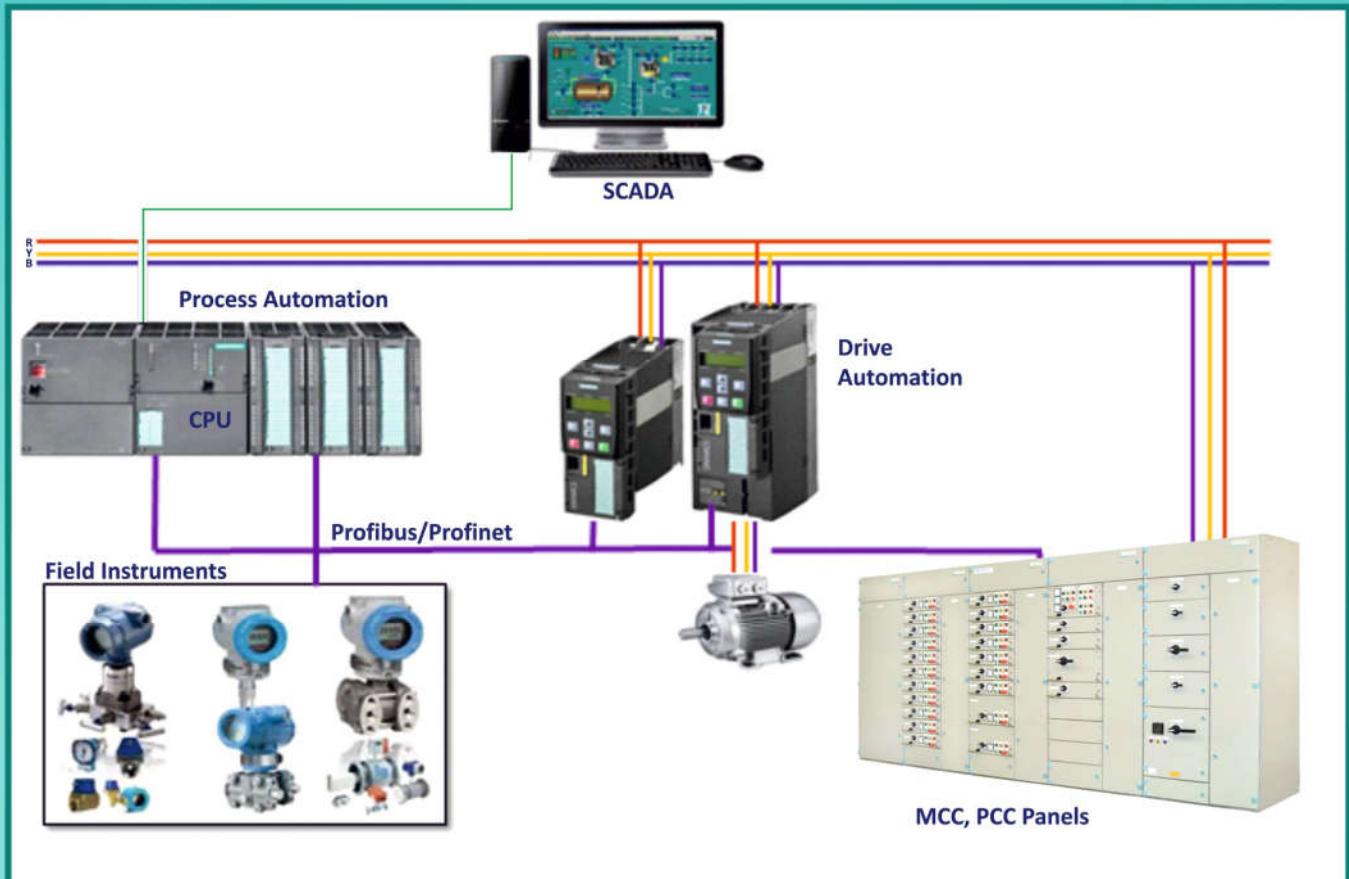
Our Mission :

To be World Class Innovative Solution & Training provider for Industrial, Power Automation & Energy Management System.

For access to web



INTEGRATED SOLUTION



Comprises of :-

- Selection and sizing of sensors related to Machinery and Process e.g., Encoder, Transducers, Position sensors.
- Industrial Electric Drive selection and sizing e.g., AC drive, DC drive, Servo drive
- Hardware and Software selection to meet the application specific Automation requirement i.e., PLC, DCS, Drive Power and Control unit.
- Selection and sizing of Field Actuators e.g., Control Valve, SOV, Dampers, MOV etc.
- Engineering and manufacturing of MCC and PCC according to the specifications.
- Manufacturing of Electrical panels according to the agreed MQAP.
- Internal Pre - dispatch inspection.
- Final inspection along with client/ third party / FAT as per contract.
- Dispatch logistics as per the contract e.g., Sea worthy packing, Export packing as per statutory requirement.
- Service support during plant commissioning.
- After sales Service support during plant operation as AMC or as mutual agreement.
- Spare part and system upgrade support as per need.
- Customer Engineers and Staff training is offered for efficient handling of the delivered solution. Hands on and class room training is conducted in AEAB office by highly experienced faculty.



PRODUCTS - at a Glance

Control Panels :

Electrical control panels and Operator console of all types are manufactured. Design and size can be standard or customized to meet specific requirement. Material of fabrication can be chosen from MS, SS or Aluminum sheet.

As per customer requirement, panels can be delivered either as empty enclosure or can be built with required Electrical system.

Design of the manufactured panels meets IP55 requirement for which CPRI certification for type testing is already obtained.

Panels are delivered as per the specified type of packing meeting domestic or international requirement. Application based, in brief, is the spectrum of panels offered and is as narrated below.



Motor Control Centre (MCC)

MCC panels offered are of two types namely,
1) Fixed front and 2) Draw out type.

Design and size of the of the Compartment, Cable alley, Bus bar chamber can be customized to meet design requirement of the customer/consultant.



Power Distribution System:

AC and DC power distribution control panels are offered according to the customer specifications. As a standard design, 24V to 220V DC and 1Φ, 240V AC, 3Φ, 440V AC, $\pm 10\%$, 50Hz/60Hz rated control panels are manufactured. Any other design , as per customer requirement can as well be provided.



Programmable Logic Control (PLC) System:

PLC panels complete with CPU, I/O modules, Power supply unit with/without HMI provision can be delivered specific to the hardware supplier.

Array of PLC panels, meeting shipping section requirement, are manufactured specific to the hardware supplier.



Drive control System:

Drive control panel for LV system are manufactured for diverse rating and application, taking in to account the design combination requirement. Panel internal arrangement is designed as per the Drive manufacturer's laid down guidelines.



Operator Control Station:

Control console, specific to customer need and project application are ergonomically designed and manufactured. Operation element on console top of the any type can be accommodated. Console internals are customized meeting operation and maintenance needs.

Consoles with Stainless Steel or Wooden top finish are also available .

PRODUCTS - at a Glance

Sheet Steel Fabrication:



Our expertise is in fabrication of customized Design of components, parts and assembly with high level of accuracy and quality. Activities involved begin with visualization of the requirement and converting them into 3D design format for customer review and approval. Alternatively, we also accept customer 3D design input and convert them into manufacturing drawings.



Manufacturing of the components is done on machines providing close tolerance. In stage measurement is a routine activity to monitor the required level of accuracy. No reworking is allowed except rejection.



Only MIG/TIG welding done to achieve superior finish, besides producing high quality welded joints.

Fabrication Technique:

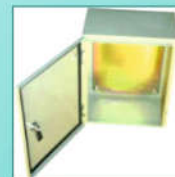
Special profile components are cut on Laser cutting M/C to achieve the required shape with high integrity. Non standard dimensions can be easily cut with in close tolerance. Cutting profile can be in Right Angle or in Curve. Repeatability of production dimensions is totally reliable, which provides free interchangeability of the mass produced components.

Any change in profile or dimension is easily possible without lapse of time as needed in case of conventional die punching process. Hence productivity target is not missed to maintain the overall schedule.

Hydraulically controlled is the bending operation to produce accurate bending profile, which is linear over the entire component length. Multifold bending is carried to achieve the desired profile, which is in continuation to the advantage drawn out of special profile made on Laser cutting M/C.

Customized bending angle requirement can also be fulfilled besides Right Angled bending, that to in short dimension.

Some of the examples



PRODUCT AND APPLICATION

PAPER INDUSTRY APPLICATIONS:



- Paper Machine , Paper Coating, Super Calendar Area
- Re-winder: Globe, Jegenberg & others OEM make
- Cutter: Retrofitting of Pasaban, Jegenberg, Wills cutter make

STEEL INDUSTRY APPLICATIONS:



- Rolling Mill- 4Hi, 6Hi, 12Hi, 20Hi
- Sponge Iron Kiln
- Wire Rod Mill for Steel
- Tube Mill (ERW)
- Wire Rod Mill
- Continuous Galvanizing Line
- Slag Grinding
- Coil Build Up Line
- Ladle Heating Furnace
- Annealing & Pickling Line
- Cut To Length - CTL
- Slitting line
- Edge Trimmer
- Automatic Strip Thickness Control
- Tension Leveler.
- Stretch Reducing
- Auto Mould width control

PLC, DCS SOLUTION



- Customized Automation solution for Paper, Steel, Process, Water Management
- Fully assembled hardware cabinets with FAT at own workshop.
- Customized Software development for each application.
- Hardware, Software implementation at site as per plant condition.

DRIVE CONTROL

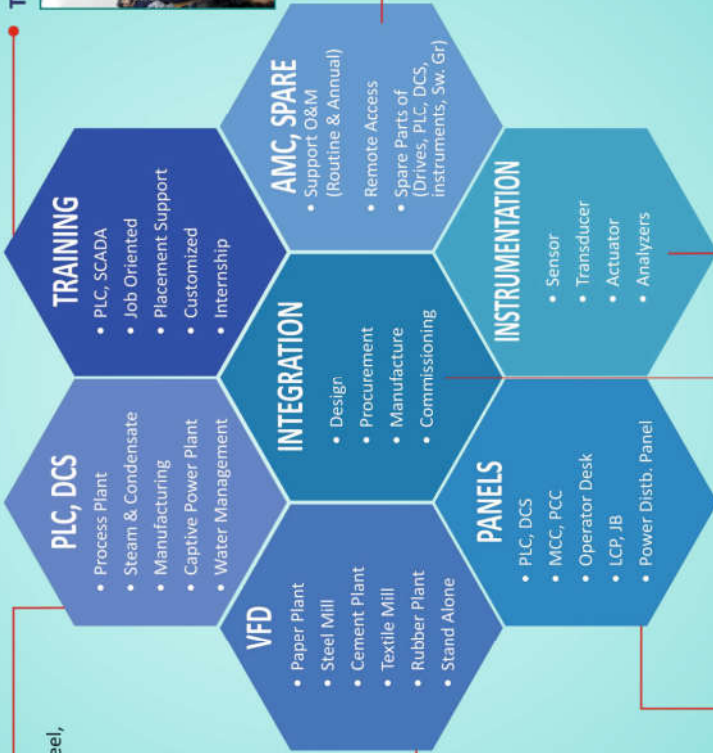


- AC, DC, Servo Drive based solution (Siemens make Hardware)
- Industry served is Paper, Steel, Process, Pharmaceutical, Other Industry

ELECTRICAL PANEL BUILDING



- MCC, PCC, Power distribution panels manufacturing as per customer specifications.
- Switch Gear of Siemens, Schneider, L&T, CG, C&S make is optional.
- PLC, DCS cabinet assembly as per standard MQP.
- Provision of offering FAT to the clients.
- CPRI certified for IP55 and Short time current 50KA.
- TTA panel of Siemens - SIEPAN



TRAINING CENTRE – AUTOMATION



- Class room training on PLC, DCS, Drive Automation, Process Instrumentation.
- Hands on training on real System Hardware .
- Job oriented training.
- Training contents and duration match trainee's need.
- Special training module for the practicing professional to enhance their skill and fulfill aspirational goal.
- 100% placement assistance

SPARE PARTS & SERVICES



- Spare parts of PLC, DCS, AC/DC/Servo Drive of Siemens make – Short delivery time.
- On site trouble shooting offered at short notice – Emergency condition.

INSTRUMENTATION SOLUTION



- Selection and sizing of all type of Sensors & Actuators
- Installation Hook Ups of Instruments.
- Liquid and Gas Analyzers
- C&I Cabling, Piping, Air distribution solution
- UPS , AC/DC Power Distribution solution
- Integration of PAS, CCTV, AAGMS.

INTEGRATED SOLUTION ENCOMPASSES



- Design Engineering services
- Procurement
- Manufacturing, Testing
- Installation supervision
- Commissioning

Overview of SOLUTIONS

Introduction

AEAB Pvt. Ltd. is a Siemens channel partner for providing Industrial Automation solution. Siemens provides the contemporary state of the art Hardware, Software and Product training to bring AEAB engineers at par with Siemens in house competency level.

The solutions offered by AEAB Pvt. Ltd. are on the following products.



A) Programmable Logic Control – PLC :

Small and medium size industry automation need is fulfilled by implementing Siemens PLC SIMATIC S7. Wide spectrum solution based on I/O count varying from double digit to 10,000 can be served. PLC can be configured in Redundant and non-redundant mode, depending on the process requirement.



B) Distributed Control System – DCS :

Bigger size industry needing multiple controllers is served with DCS. Not only this solution caters to higher I/O count but as well provide fully redundant, hot swappable Automation system. Highest level of automation solution can provide total redundancy right from I/O level, CPU, Power supply and communication network. Signal/data transmission speed can be achieved from 100 to 1000 MBPS.

Application – PLC , DCS :

Primarily PLC is used for all type of process automation. Typically, AEAB uses this system for the following.

- Paper Industry : Automation of Pulping section, Paper M/C, Re-winder, Steam and condensate cycle.
- WTP, STP : Water management system for Water treatment and disposal.
- Cement Plant : Mill area, Kiln and WHRB.
- Agro Industry : Milk processing, Rice separation, Vegetable oil processing.
- Building Automation : Utility section automation for AHU, Chiller, Compressor, Air damper, Temperature and humidity control.
- Captive Power Plant : Automation of Boiler, Steam and condensate cycle.



C) Motor Control Center (MCC)- Typical Tested Assembly (TTA) SIEPAN

AEAB Pvt. Ltd. offers MCC for all type of industry. 3Ph, 415V AC or 1 phase 120V, 220V rated switch board is designed and manufactured as per MQAP as mutually agreed with customer. Switchgear used is generally of Siemens make. Alternatively, customer recommended switch gear is also implemented.

Typical Tested Assembly (TTA) SIEPAN MCC is also available from AEAB Pvt. Ltd. Siemens have trained and authorized AEAB team to design and manufacture TTA MCC (SIEPAN) . Customer has a choice to opt for SIEPAN or standard type of MCC.

MCC delivered by AEAB Pvt. Ltd. is available with IP55 protection class. Short time current rating up to 50 KA is type tested on the manufactured MCC. Pre dispatch inspection is done for entire manufactured lot by default.



Intelligent Motor Control Center – iMCC (SIMOCODE)

SIMOCODE is the flexible and modular motor control system for low-voltage motors. It can easily and directly be connected to automation systems via PROFIBUS or PROFINET and covers all functional requirements between the motor starter and the automation system . Further, SIMOCODE combines in just one compact system all required protection, monitoring, safety and control functions. The motor management system thus helps you to increase the process control quality and reduce costs at the same time

Overview of SOLUTIONS

D) Drive automation – AC, DC and Servo :



Almost every manufacturing industry uses motor in the plant. Depending upon the application, Motor along with Drive Automation is quite common in demand. May be it is the production process requirement or for energy saving in general, the objective is fulfilled by use of Drive control.

AEAB provides Drive automation solution by implementing world renowned Siemens make of Drives. Type of drive can be AC, DC or servo to meet specific need. AEAB offers complete solution, in LV rating, comprising of field sensors and Drive automation panel inclusive of PLC, Switch gear and other electrical accessories.

Application – Drive Automation:

AEAB specializes in implementation of Drive control in the following industry.

- | | |
|---|---------------------|
| A) Paper Plant | D) Sponge Iron |
| B) Steel and non ferrous sheets manufacturing | E) Power Plant |
| C) Cement plant | F) Process industry |



E) Power Control Center – PCC:

Power distribution board is a common requirement in Industry, Utility and Domestic application. AEAB provides wide spectrum of PCC panel up to 3Ph., 415 V AC and DC power supply distribution. PCC Design requirement is mostly customized in terms of size and rating which is met as per the customer specifications.

PCC panel Protection class and short time current rating specification is same as of MCC panels.



F) Instrumentation:

Complete solution of process Sensors, Transducers, and Actuators is available from AEAB Pvt. Ltd. Scope of work comprises of selection, sizing, procurement, pre dispatch inspection and E&C. Compatibility with Control system is an integral part of the responsibility.

Choice of Instrumentation sensor and actuators manufacturer is up to the customer and implementation is the responsibility of AEAB Pvt. Ltd.



G) Annual maintenance contract (AMC) and spare parts:

Post completion of the project, AMC is offered to the customers. Need based services are also available, depending on the customers requirement. Customer is free to choose.

Spare parts are made available from the OEM if customer would like to avail the AEAB Pvt. Ltd. services.




H) Training facility :

AEAB Pvt. Ltd. has a training vertical providing professional services to train customer engineers/staff. Training is imparted on the entire spectrum of offered scope of work. Highly experienced faculty from the industry is employed to impart the training.

Besides class room training, hands on training on actual hardware and software is the standard training format.

ACCREDITATION



Siemens
Ingenuity for life


Digital Factory /
Process Industries & Drives

Certificate
M/s. Automation Engineers AB Pvt. Ltd.
Delhi.
is our **Authorised Channel Partner (System House)**, since 1998 for
Automation and Drive Products.

Valid upto
30th September 2019

Usha Schindler
Vivek Chandra

Siemens System House/Channel Partner



Siemens
Ingenuity for life

Digital Factory

Certificate
M/s. Automation Engineers A. B. Pvt. Ltd.
Jaipur.
is our **Licensed Partner**,
for manufacture and assembly of SEPAN RPU, Low Voltage Switchboards

Valid upto 30th September 2019

R.S. Mehta
Vivek Chandra

Siemens Licensed Partner – LT Switch Board

Tel. No.0755-2586143
Fax No. 0755 - 2587774
Email: cprihq@cpri.res.in

CENTRAL POWER RESEARCH INSTITUTE
GOVINDPURA : BHOPAL - 462 023

PROVISIONAL REPORT

Test Report No. CPRI/PLSTNB/1819T0218 Date of test: 13th June, 2018

- Customer: M/s Automation Engineers A B Pvt. Ltd., Noida
- Sample tested: LT Switch Board (Non Extendable)
- Serial Number: AEAB/50K
- Sample Code No.: STNB1819S0285
- Type: Power Cum Motor Control Centre
- 5.1 Designation: Main Distribution Panel
- Drawing Number: AEAB/18/50K SHEET 1 OF 3, AEAB/18/50K SHEET 2 OF 3 & AEAB/18/50K SHEET 3 OF 3
- Rating of the Sample:

7.1 Rated Voltage : 415 V	7.2 Rated Current : 4000 A
7.3 Rated insulation voltage : 660 V	7.4 No. of phases : Three phase + Neutral
- Degree of protection: 50 kArms for 1.0 second with initial peak of 105 kAip
- 7.6 Rated short time current: 50 kArms for 1.0 second with initial peak of 105 kAip
8. Sample tested for the following ratings:

8.1 Voltage : 415 V	8.2 Current : 4000 A
---------------------	----------------------
- 8.3 Insulation voltage : 660 V
- 8.4 Short time current: 50 kArms for 1.0 second with initial peak of 105 kAip
- 9 Type of test carried out: Verification of the short circuit withstand strength
- 10 Specification followed: As per cl. 6.2.3 of IS:8623 (Part-1), 1993
- 11 Test results:

Oscillogram No.	Short time current in kAip/kArms	Duration in second	Equivalent current for 1.0 second in kArms
CPRI/PLSTNB/1819T0218/S02	80.89	81.70	108.0/51.84
(Three phase short circuit withstand strength test conducted on main phase busbars consisting of HBB+VBB+HBB)			51.84
CPRI/PLSTNB/1819T0218/S04	85.07/30.87	1.0	30.87
(Single phase short circuit withstand strength test conducted on neutral & nearest phase main circuit busbars consisting of HBB+VBB+HBB)			

Observations: No abnormality. Fine wire fuse intact. All busbars & supports intact.
Remarks: After test, the sample withstood HV test at 2.5 kVrms for one minute as per standard.

TEST ENGINEER: [Signature]
LABORATORY CHARGE: [Signature]

CPRI Certificate - Short Time Current 50 KA

CENTRAL POWER RESEARCH INSTITUTE
(Member of STL)

TEST REPORT

Test Report No. CPRI/PLSTNC/1819T0185 Dated: 2 JAN 2019

Name and Address of the Customer: M/s. Automation Engineers AB Pvt. Ltd., A-89 Sec - 83, Noida, G.B. Nagar (U.P.)

Name and Address of the Manufacturer: M/s. Automation Engineers AB Pvt. Ltd., A-89 Sec - 83, Noida, G.B. Nagar (U.P.)

Particulars of Sample(s) Tested: 415V, 200A, LT Panel

Condition of sample(s) on receipt: New

Type: Electrical Control Panel
Description of the sample: Main Distribution Board Panel
Serial Number(s): AEAB/50
Number of Sample(s) Tested: One
CPRI sample code number(s): STNC 1819S0126
Sealing of the sample, if any: Nil

Particulars of tests conducted: Degree of Protection IP-55 (Category -1)

Date(s) of Test(s): 13/06/2018 & 14/06/2018
Test(s) in accordance with: IEC 60947-2:2007 (Part-1), IEC 60947-4:2007 (Part-1), IEC 60947-5-1:2002 (Part-1), IEC 60947-5-2:2002 (Part-1), IEC 60947-5-3:2002 (Part-1), IEC 60947-5-4:2002 (Part-1), IEC 60947-5-5:2002 (Part-1), IEC 60947-5-6:2002 (Part-1), IEC 60947-5-7:2002 (Part-1), IEC 60947-5-8:2002 (Part-1), IEC 60947-5-9:2002 (Part-1), IEC 60947-5-10:2002 (Part-1), IEC 60947-5-11:2002 (Part-1), IEC 60947-5-12:2002 (Part-1), IEC 60947-5-13:2002 (Part-1), IEC 60947-5-14:2002 (Part-1), IEC 60947-5-15:2002 (Part-1), IEC 60947-5-16:2002 (Part-1), IEC 60947-5-17:2002 (Part-1), IEC 60947-5-18:2002 (Part-1), IEC 60947-5-19:2002 (Part-1), IEC 60947-5-20:2002 (Part-1), IEC 60947-5-21:2002 (Part-1), IEC 60947-5-22:2002 (Part-1), IEC 60947-5-23:2002 (Part-1), IEC 60947-5-24:2002 (Part-1), IEC 60947-5-25:2002 (Part-1), IEC 60947-5-26:2002 (Part-1), IEC 60947-5-27:2002 (Part-1), IEC 60947-5-28:2002 (Part-1), IEC 60947-5-29:2002 (Part-1), IEC 60947-5-30:2002 (Part-1), IEC 60947-5-31:2002 (Part-1), IEC 60947-5-32:2002 (Part-1), IEC 60947-5-33:2002 (Part-1), IEC 60947-5-34:2002 (Part-1), IEC 60947-5-35:2002 (Part-1), IEC 60947-5-36:2002 (Part-1), IEC 60947-5-37:2002 (Part-1), IEC 60947-5-38:2002 (Part-1), IEC 60947-5-39:2002 (Part-1), IEC 60947-5-40:2002 (Part-1), IEC 60947-5-41:2002 (Part-1), IEC 60947-5-42:2002 (Part-1), IEC 60947-5-43:2002 (Part-1), IEC 60947-5-44:2002 (Part-1), IEC 60947-5-45:2002 (Part-1), IEC 60947-5-46:2002 (Part-1), IEC 60947-5-47:2002 (Part-1), IEC 60947-5-48:2002 (Part-1), IEC 60947-5-49:2002 (Part-1), IEC 60947-5-50:2002 (Part-1), IEC 60947-5-51:2002 (Part-1), IEC 60947-5-52:2002 (Part-1), IEC 60947-5-53:2002 (Part-1), IEC 60947-5-54:2002 (Part-1), IEC 60947-5-55:2002 (Part-1), IEC 60947-5-56:2002 (Part-1), IEC 60947-5-57:2002 (Part-1), IEC 60947-5-58:2002 (Part-1), IEC 60947-5-59:2002 (Part-1), IEC 60947-5-60:2002 (Part-1), IEC 60947-5-61:2002 (Part-1), IEC 60947-5-62:2002 (Part-1), IEC 60947-5-63:2002 (Part-1), IEC 60947-5-64:2002 (Part-1), IEC 60947-5-65:2002 (Part-1), IEC 60947-5-66:2002 (Part-1), IEC 60947-5-67:2002 (Part-1), IEC 60947-5-68:2002 (Part-1), IEC 60947-5-69:2002 (Part-1), IEC 60947-5-70:2002 (Part-1), IEC 60947-5-71:2002 (Part-1), IEC 60947-5-72:2002 (Part-1), IEC 60947-5-73:2002 (Part-1), IEC 60947-5-74:2002 (Part-1), IEC 60947-5-75:2002 (Part-1), IEC 60947-5-76:2002 (Part-1), IEC 60947-5-77:2002 (Part-1), IEC 60947-5-78:2002 (Part-1), IEC 60947-5-79:2002 (Part-1), IEC 60947-5-80:2002 (Part-1), IEC 60947-5-81:2002 (Part-1), IEC 60947-5-82:2002 (Part-1), IEC 60947-5-83:2002 (Part-1), IEC 60947-5-84:2002 (Part-1), IEC 60947-5-85:2002 (Part-1), IEC 60947-5-86:2002 (Part-1), IEC 60947-5-87:2002 (Part-1), IEC 60947-5-88:2002 (Part-1), IEC 60947-5-89:2002 (Part-1), IEC 60947-5-90:2002 (Part-1), IEC 60947-5-91:2002 (Part-1), IEC 60947-5-92:2002 (Part-1), IEC 60947-5-93:2002 (Part-1), IEC 60947-5-94:2002 (Part-1), IEC 60947-5-95:2002 (Part-1), IEC 60947-5-96:2002 (Part-1), IEC 60947-5-97:2002 (Part-1), IEC 60947-5-98:2002 (Part-1), IEC 60947-5-99:2002 (Part-1), IEC 60947-5-100:2002 (Part-1)

TEST ENGINEER: [Signature]
LABORATORY CHARGE: [Signature]

CPRI Certificate – Protection Class IP55

SKILL INDIA
AAROGYAM

IASC
SECTOR SKILL COUNCIL
FOR AUTOMATION SURVEILLANCE AND COMMUNICATION

CERTIFICATE OF MEMBERSHIP

This certificate is granted to
AUTOMATION ENGINEERS A.B.P. LTD
in recognition of Contribution in
Instrumentation Automation Surveillance
and Communication Sector Skill Council.
VALID UPTO 29.07.2021

Date: 30.07.18 Certificate No.: 000212

Membership Certificate- IASC, S S Council

KVQA
Certificate of Registration
(Quality Management System)

KVQA CERTIFICATION SERVICES PVT. LTD.
This is to certify that the Quality Management System of
AUTOMATION ENGINEERS A.B. PVT. LTD.
Regd. Office: 98, Vardaan Apartment, 64, LP, Extension,
Patparganj, Delhi- 110092, India
Factory: A-69, Sector- 83, Phase- II, Noida -201305, U.P., India
Has been found to be of the Quality Management System Standard
ISO 9001:2015
This certificate is valid for the following product or service range
**Marketing & Sales, Design Engineering, Manufacturing,
Assembly, Installation Supervision and Commissioning
of Automation and Power Systems.**

1st Surveillance Due On: 09/01/2020; Done On: [Signature]
2nd Surveillance Due On: 09/01/2021; Done On: [Signature]

Certificate No: IQSC201902018
Date of Issue: 05, February, 2019
Valid Until: 05, February, 2022

IAF

JAS-ANZ
JAS-ANZ is the government-appointed accreditation body for Australia and New Zealand responsible for providing accreditation of conformity assessment bodies (CABs) in the fields of certification and inspection. Accreditation by JAS-ANZ demonstrates the competence and independence of KVQA. Accredited by a member of IAF's MSA, for Quality Systems. To Check the Status of the Certificate Body, log on to www.iaf.or.jp. P-300, Route 401, Torrey Pines, CA, USA. Phone: 0111-714-0111, 0111-714-0112, email: info@ias-anz.com. *Subject to successful completion of surveillance audits.

ISO 9001, 2015 Certificate

MAJOR CLIENT LIST

CLIENT NAME	LOCATION	PROJECT DETAIL
PAPER INDUSTRY		
ABC paper Ltd,Saila khurd	Punjab	Paper M/C Rewinder
KR Pulp & Papers Ltd,	Shahjahnpur	Paper M/C Rewinder
Star Paper mills Ltd,	Saharanpur	Paper M/C
Naini Papers Ltd,	Kashipur (U.K)	Paper M/C, Rewinder
Naini Tissues Ltd,	Kashipur (U.K)	Paper M/C, Rewinder
J.K Paper Ltd.	Several	Paper coating, Super calander, Pasban Cutter
Vishal Coaters Limited	Patiala	Paper Machine
Lina Paper Mills Ltd,	Bangladesh	Paper Machine
Shree Bhageshwari paper Mill Ltd.	Muzzaffarnagar	Rewinder M/C,
Siddheshwari Paper Mill Ltd.	Muzzaffarnagar	Rewinder M/C.
Satia Industries Ltd	Punjab	Paper M/C, Rewinder,
Ruchira Papers Ltd.	Himachal	Paper M/C, Stm & Cond Stock Prep
Speciality Pulp and paper Ltd.	Nigeria	Paper M/C, Rewinder
Pearl Paper and Board Mill Ltd	Bangladesh	Paper M/C, Rewinder
PAPCEL Pulp and Paper Technology Pvt. Ltd.	Telangana	Paper Plant M/C
Katyayini paper mills Pvt. Ltd.	Kashipur	Paper M/C, Rewinder, Stm & Cond
Devrishi paper Pvt. Ltd.	Kashipur	Paper M/C, Rewinder, Stm & Cond
Vishwanath Paper & Boards Ltd.	Kashipur	Paper M/C, Stm & Cond
METAL/STEEL INDUSTRY		
Hindalco Industries.	Renusagar	ARW, CHP, AHP
Mas Equipment pvt. Ltd.	Several	CTL, Edge Trimmer, SL Pickling line, Rolling mill, Galvanising, Coating
Monnet Ispat & Energy Ltd.	Raigarh	Sponge iron kiln
Essar Steel Limited	Hazira	Ladle Heating Furnace, RH Degassing
Jindal Saw Limited	Samaghogha	Spiral Pipe Mill
Indian Steel Corporation Ltd.	Gandhidham	Cut to Length
Jindal Saw Limited	Nasik	Seamless Tubes & Pipes
IUP Jindal Hexa Metal Ltd.	Bahadurgarh	Annealing & Pickling
JSW Steel Limited	Karnatka	Auto Mould width control
ASIL Industries Limited	Jaipur	Cold Rolling Mill
Steelpro Philippines Inc.	Philippines	Tube Mill (ERW)
Sidhbali Ispat Ltd.	Maharashtra	TMT bar
Amba Shakti Steel Ltd.	Himachal	TMT bar
ROLLCON	Tanzania	Slitting line
Allied Strips	Bahadurgarh	Rolling Mill, CTL, SL
AHN Steel,	Pakistan	Rolling Mill
MM Integrated Steel Mills Ltd.	Tanzania	Continuous Galvanizing
Hissar Metal	Hissar	TLL
Jindal Hissar	Hissar	Degreasing line
Jindal SAW, LLC	Abudhabi	SAW Pipes
Maisha Mabati Mills Ltd. (Devki Group)	Keneya	Rolling Mill, CGL, RG
SMS Demag Ltd	Several	Continuer Caster Machine Hydraulic mould Oscillator LHF / EAF
Rollcon Engineering	Chandigarh	Slitting, Galvanising Colour Coating
Hindalco Industries Ltd.	Renukoot, UP	Bliss Cold Rolling Mill, Hot Mill, Caster, Tension Leveler, CTL Properzi, Baking Furnace, Pot Line, Boiler Co-Gen, Mecessa Slitting, Homo Furnace

CLIENT NAME	LOCATION	PROJECT DETAIL
FILM CONVERTING AND PRINTING		
U- Flex Ltd.	Noida, UP	Solvent less lamination M/C, Super Splitter,
Paharpur 3P	Sahibabad,	Film Line, Film Printing
Ester Industry	Khatima	Film Line
SRF Industry	Kashipur	Film Line
SUGAR INDUSTRY		
Dhampur Sugar Mill	UP	Mill Section
K.M Sugar Limited	Faizabad	Automation of Ethanol Dehydration Plant
J.H.V Sugars Ltd .	Varanasi	Mill application
WATER MANAGEMENT PLANT		
Deioners Speciality Chemicals Pvt. Ltd	Several	RO Treatment plant
Enhanced Wapps systems	Gurgram	STP
Membrane – NTPC	Panipat Bahadurgarh Yamuna Nagar	RO Treatment plant
Membrane- Mahou Brew	Bhiwadi	RO Treatment plant
UEM	Gurugram	WTP , STP
RICE MILLS		
Schmidh Seeger Olam International Goel international LT overseas Ltd. Donar basmati Sunstar overseas Ltd. Engro Foods	Several Domestic and Overseas	SPM Dryer
POWER PLANT		
Voith Hydro	Several	Hydro Power Plants
Genus paper products	Muradabad	CPP - 6 MW
Manglam cement	Rajasthan	WHRS
CEMENT PLANT		
Eco Cement	Durgavati Bihar	Cement Grinding, Packaging Unit
KHD Humboldt Cement	Bangladesh	Cement plant
J.K. Cement Ltd.	Several	Kiln Drive Preheater Fan
OTHER PROJECTS		
Met Trade India Ltd.	Himachal	Pot Furnace
Wire and fabrics	Jaipur	Textile
Shalimar wires	Calcutta	Textile
Tata projects Ltd., SUCG	Jaipur	Lighting & Automation
India Govt. Mint	NOIDA	Coin Machine
J.K.Tyres Limited	Gwallior	Ban bury Mixture
Birla Copper	Dahej	Anode Twin Caster
Crown Milk Specialties	Chandigarh	Casein Plant
Supreme Agro	Punjab	Milk Processing Plant
Sheel Chand Agro	Rudrapur, UK	Edible Oil
Vardhman group	Ludhiana Baddi	Textile , Looming
Thermo system Pvt. Ltd.	Several	Fire fighting
Varun Beverages (Pepsi)	Bhiwadi	Beverage Plant
Hindustan Beverage (Coca Cola)	Masoori, UP	Beverage Plant
Samsung Electronics (Thru Hyeupseong , Korea)	NOIDA, UP	BMS (for Utilities)

Why Customers Trust AEAB



PRODUCT

Design of the offered products is as per Global Standard.

SKILL

AEAB team is trained / experienced as per Global guidelines.
Commissioning team is highly experienced in Industrial environment.

QUALITY

Design, manufacturing, Hardware, Software engineering is done inline with Siemens guidelines.

DELIVERY

Short time delivery, aligned with project need, is possible because manufacturing activity is in house

TRAINING

In house training facility provides excellent opportunity to train client's team.

TOTAL SOLUTION

AEAB specializes in offering Integrated Automation Solution in terms of PLC, DCS, Instrumentation, Drive Control, MCC, and Power Automation.

Contact US

AUTOMATION ENGINEERS A.B. PVT. LTD.

Sales Off.: Plot No. A-69, Sector-83 Phase-II, Noida (Behind Hosiery Complex) U.P. 201305

E-mail: info@aeab.in, Training : training@aeab.in Website: www.aeab.in

Phone Number : Business : +91 9999610379, Training : +91 8447755969

Solution Partner

Automation

AUTHORISED SYSTEM HOUSE & SOLUTION PARTNER

SIEMENS

